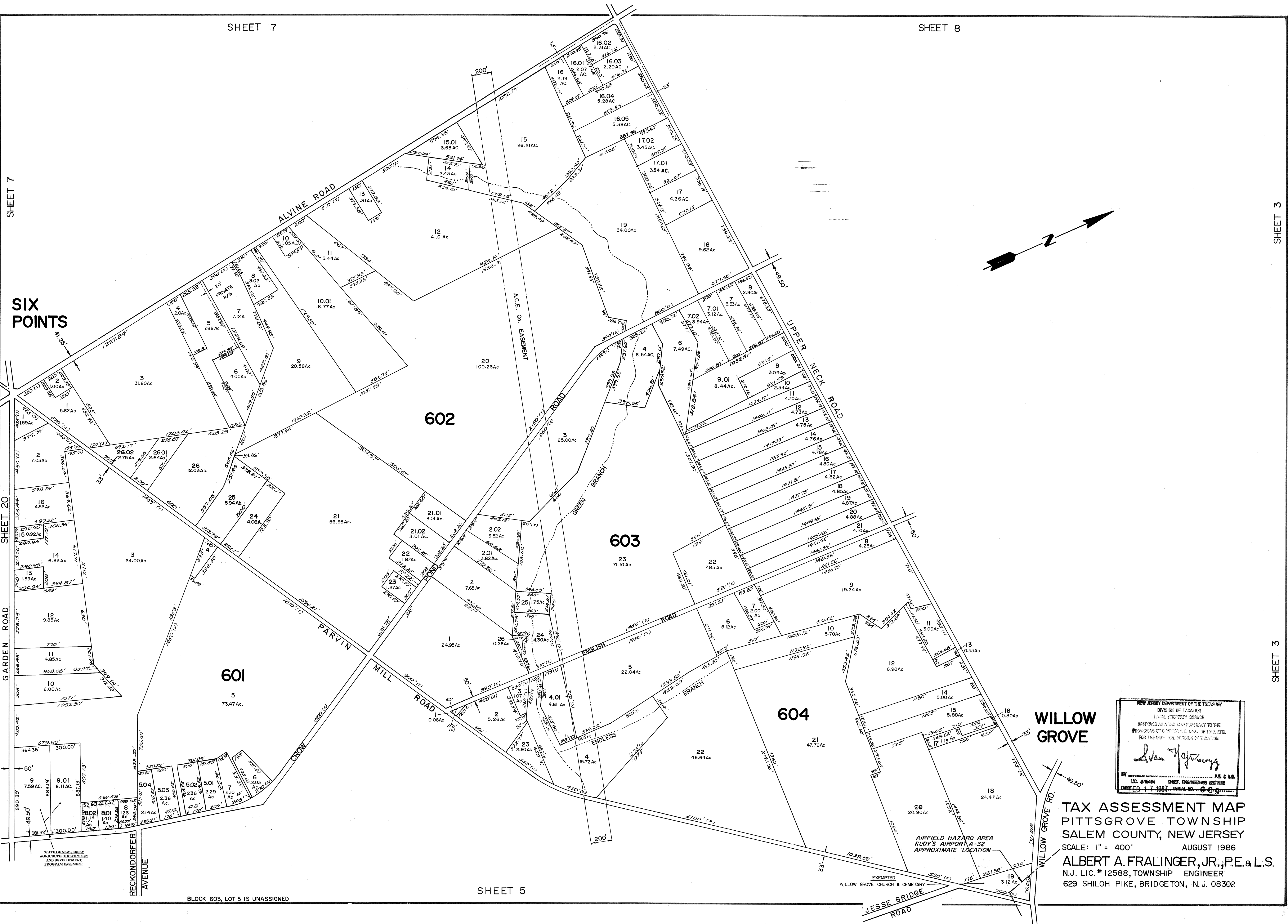
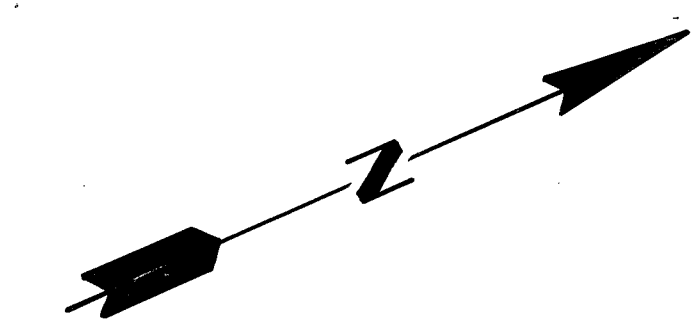


SHEET 7

SHEET 3

SHEET 3

SIX POINTS



SHEET 20

GARDEN ROAD

RECKENDORFER AVENUE

BLOCK 603, LOT 5 IS UNASSIGNED

SHEET 5

NEW JERSEY DEPARTMENT OF THE TREASURY
 DIVISION OF TAXATION
 LOCAL PROPERTY TAXES
 APPROVED AS A TAX MAP PRESENTED TO THE
 PRODIGERS OF COUNTY OF SALEM, N.J.
 FOR THE RECORDS, OFFICE OF TAXATION

Alan Hefner

BY: _____ P.E. & L.S.
 DATE: 7-1987

TAX ASSESSMENT MAP
 PITTSBORO TOWNSHIP
 SALEM COUNTY, NEW JERSEY
 SCALE: 1" = 400'
 AUGUST 1986
ALBERT A. FRALINGER, JR., P.E. & L.S.
 N.J. LIC. # 12588, TOWNSHIP ENGINEER
 629 SHILOH PIKE, BRIDGETON, N.J. 08302